

CHP - Compact High Performance Headends

HDMI | DVB-C/T/IPTV encoder/modulator

- ✓ Future-proof thanks to hybrid technology
- ✓ 4 x HDMI into 1 or 2 x DVB-C/T or in IPTV
- ✓ Freely selectable DVB-C/T output channels
- ✓ H.264
- ✓ Converts the HDMI resolution 1080p@50/60 Hz to DVB-compliant 1080p@30 Hz
- ✓ Class A according to EN 50083-2
- ✓ Web-based configuration, remote maintenance (SMARTPortal)
- ✓ Built in power supply
- ✓ Can be used for wall mounting or as a 19" unit, 1 RU (with HKZ 1-00)



Available devices:

HKM 40-02H 4 x HDMI | 2 x DVB-C/T or in IPTV

Software extension:

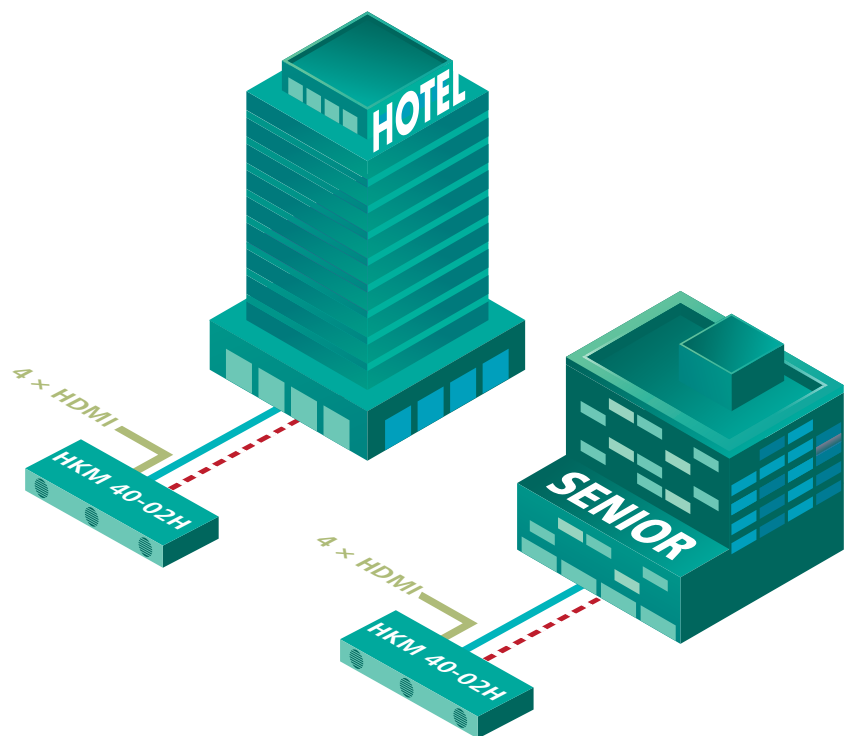
HKS 1-00H IPTV output

Accessories:

HKZ 1-00 Front panel for 19" usage

Hybrid technology

The new modulator initially offers DVB-C or DVB-T signals at the output as usual. However, due to the hybrid technology, these can be extended to include IPTV with the software extension HKS 1-00H. This gives you planning security for the future. Should you upgrade your building to IPTV in the future, you can use the HKM 40-02H to stream hotel videos or info channels in parallel in IPTV. This allows, for example, a smooth transition floor by floor.



AXING AG

Gewerbehau Moskau

Phone +41 52 - 742 83 00

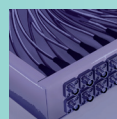
Fax +41 52 - 742 83 19

8262 Ramsen

info@axing.com

www.axing.com

Type	HKM 40-02H
Inputs	
Number	4 × HDMI
Supported protocols	HDCP 1.x
Video resolution	1080p@50 Hz 1080p@60 Hz
Max. bit rate per channel	16 Mbit/s
Audio Encoder	MPEG-1 audio layer II
Video Encoder	H.264 (MPEG-4)
Output	
Number of channels	1 oder 2 × DVB-C/DVB-T
Frequency range	45 ... 862 MHz
Channels selectable	E2....E69
Connector	1 × F-female
Test port	1 × F-female (−30 dB)
Impedance	75 Ω
Output level adjustable	90...105 dBμV @ 1 channel 87...102 dBμV @ 2 channels
Video resolution	1080p@25 Hz 1080p@30 Hz
Output modulation	
Type	16QAM, 32QAM, 64QAM, 128QAM, 256-QAM @ DVB-C 16QAM, 64QAM @ DVB-T
MER	≥ 40 dB @ DVB-C ≥ 36 dB @ DVB-T
Bit rate, max	50.87 Mbps @ DVB-C 31.668 Mbps @ DVB-T
FFT	2K, 8K mode @ DVB-T
FEC	1/2, 2/3, 3/4, 5/6, 7/8 @ DVB-T
Guard interval	1/4, 1/8, 1/16, 1/32
Symbol rate	1 ... 7.5 MBaud/s
IP output	
Transportstreams	4 × SPTS
Total net data rate	80 Mbps
Supported transport protocols	UDP
Supported application protocols	RTP
Interfaces	
Ethernet connectors (LAN)	2 × RJ 45
Ethernet standards	IEEE 802.3, 100 Base-T
Supported configuration protocols	HTTP, AXING SMARTPortal*
General	
Operating voltage	100 ... 240 VAC/50 ... 60 Hz
Power consumption	25 W
Operating temperature range (acc. to EN 60065)	-10 °C...+50 °C
Dimensions (W × H × D) appr.	480 × 253 × 47 mm
Weight	2.350 kg
Comments	* with software extension only ** encrypted, cloud-based application for configuration, monitoring and remote maintenance



AXING AG

Gewerbehau Moskau

Phone +41 52 - 742 83 00

Fax +41 52 - 742 83 19

8262 Ramsen

info@axing.com

www.axing.com