

CHP - Compact High Performance Headends

Modular EdgeQAM system

- ✓ Two redundant IPTV inputs (900 Mbps) per module
- ✓ Supports SPTS and MPTS (also mixed)
- ✓ Transmodulates max. 512 input streams into DVB-C (J.83 Annex A/C) or DVB-T
- ✓ Re-Multiplexing and PID Filtering
- ✓ Program duplication
- ✓ Device redundancy configurable (software extension required)
- ✓ Interface for CASimulcrypt Server (software extension required)
- ✓ Class A according to EN 50083-2
- ✓ Web-based configuration, suitable for AXING SMARTPortal
- ✓ Supports SNMPv1 and SNMPv2c
- ✓ 2 × redundant power supply units (also available as 36...60 VDC version)
- ✓ 19" housing, 1RU

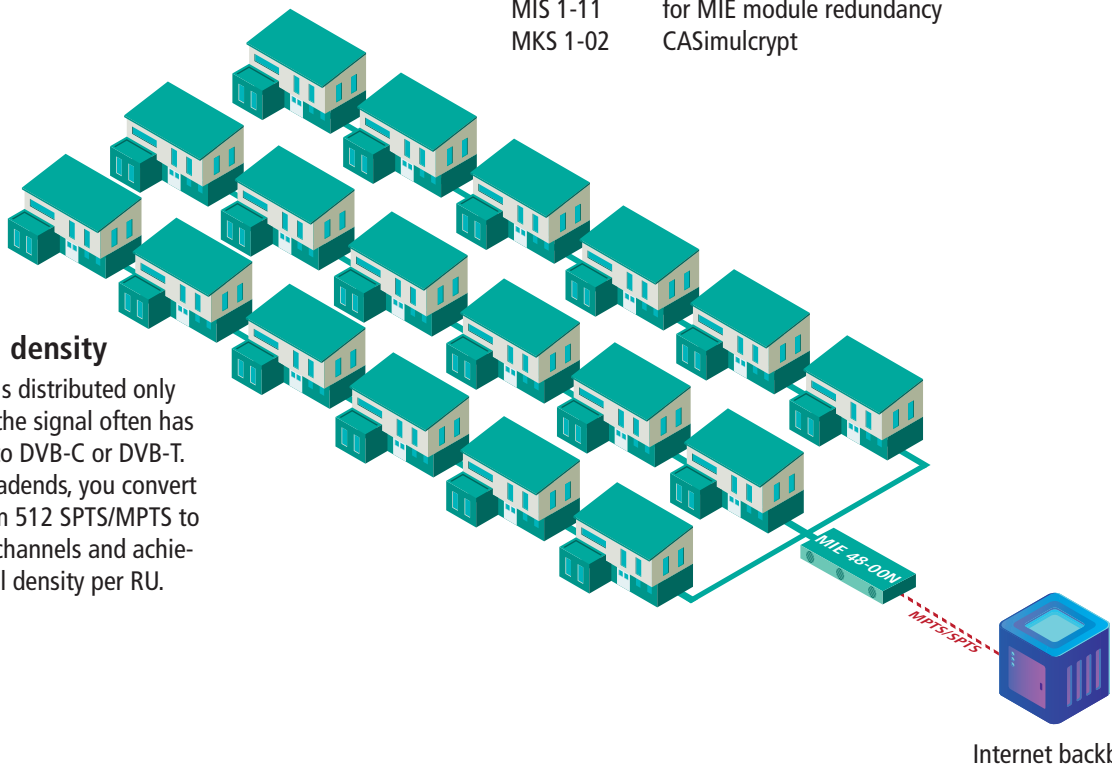


Available devices:

- MIE 24-00N Includes 1 module
Transmodulates max. 512 input streams in 24 × DVB-C (J.83 Annex A/C) or 24 × DVB-T output channels
- MIE 48-00N Includes 2 modules
Transmodulates max. 512 input streams in 2 × 24 DVB-C (J.83 Annex A/C) or 2 × 24 DVB-T output channels
- MIM 24-00N Extension module for MIE 24-00N
Additional 512 input streams
Additional 24 DVB-C/-T output channels

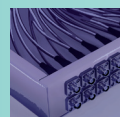
Software extensions

- MIS 1-11 for MIE module redundancy
- MKS 1-02 CASimulcrypt



High channel density

When television is distributed only via the Internet, the signal often has to be converted to DVB-C or DVB-T. With the new headends, you convert programmes from 512 SPTS/MPTS to 24 or 48 output channels and achieve a high channel density per RU.



Type	MIE 24-00N	MIE 48-00N
IPTV input		
Max. number (out of SPTS or MPTS)	512	2 × 512
Total net data rate	1 × 900 Mbps	2 × 900 Mbps
Transportstreams		
Modifiable program information	Programmname, SID-Remapping, PID-Filtering, TSID, ONID	
PCR correction	automatisch, adaptiv, <500 ns	
LCN	Yes	
NIT handling @ DVB-C	auto manual off	
EPG regeneration	Yes	
Encryption	DVB-CSA* DVB-CISSA* ATIS-IDSA* AES-ECB* AES-CBC*	
Output		
Number of channels	1 × 24 DVB-C 1 × 24 DVB-T	2 × 24 DVB-C 2 × 24 DVB-T
Frequency range	109...1006 MHz @ DVB-C 109...862 MHz @ DVB-T	
Channels selectable	S2...K87 @ DVB-C S2...K69 @ DVB-T	
Channel bandwidth	7/8 MHz @ DVB-T	
Possible frequency shift	-4...+4 MHz (0.5 MHz steps)	
Connector	1 × F-female	
Test port	1 × F-female (-30 dB)	
Impedance	75 Ω	
Output level adjustable	85...105 dBμV @ DVB-C 82...102 dBμV @ DVB-T	82...102 dBμV @ DVB-C 79...99 dBμV @ DVB-T
Output modulation		
Compliance	EN 50083-9 ETSI TS 101 154 ETSI EN300 429 ETSI EN 300 744 ITU-T J.83A/C	
Type	QAM32, QAM64, QAM128, QAM256 @ DVB-C QPSK, QAM16, QAM64 @ DVB-T	
Supported output formats	MPEG-2/H.262, MPEG-4/H.264 and HEVC/H.265	
MER	≥ 40 dB @ DVB-C ≥ 36 dB @ DVB-T	
BER	≥ 9x10 ⁻⁹	
Roll off	15 %	
Shoulder attenuation	≥ 56 dB	
C/N	≥ 45 dB	
Reflection	> 14 dB	
Bit rate, max	50.87 Mbps @ DVB-C 31.668 Mbps @ DVB-T	
FFT	2K mode @ DVB-T	
FEC	1/2, 2/3, 3/4, 5/6, 7/8 @ DVB-T	
Guard interval	1/4, 1/8, 1/16, 1/32 @ DVB-T	
Symbol rate	1...7.5 MBaud/s	
Interfaces		
Ethernet connectors (LAN)	4 x RJ45	
Ethernet standards	IEEE 802.3, 100 Base-T @ Control IEEE 802.3, 1000 Base-T /1 GbE @ IPTV IN1, IPTV IN2, CAS	
Software control and upgrading	Via Remote Access	
Supported configuration protocols	HTTP, SNMP v1, SNMP v2c, AXING SMARTPortal**	
General		
Operating voltage	100...240 VAC/50...60 Hz	
Switching power supply	2 (redundant)	
Power consumption	30 W	
Equipotential bonding connection	4 mm ²	
Operating temperature range (acc. to EN 60065)	-10°C...+50°C	
Storage temperature range (acc. to EN 60065)	-20 °C...+80 °C	
Dimensions (W × H × D) appr.	480 × 43 × 275 mm	
Weight	3.200 kg	3.700 kg
Comments	* with software extension MKS 1-02 only ** encrypted, cloud-based application for configuration, monitoring and remote maintenance	



AXING AG

Gewerbehaus Moskau

Phone +41 52 - 742 83 00

Fax +41 52 - 742 83 19

8262 Ramsen

info@axing.com

www.axing.com