

CHP - Compact High Performance Headends

IPTV Streamer | Multituner | SPTS/MPTS

- ✓ Independent multituner inputs
- ✓ Transmodulates DVB-S/S2/S2X/T/T2/C into SPTS/MPTS
- ✓ GbE-interface with max. 900 Mbps
- ✓ Web-based configuration, remote maintenance (SMARTPortal)
- ✓ Supports SNMPv1 and SNMPv2c
- ✓ M3U playlist for the TV/radio programs of the transport stream
- ✓ Interface for CASimulcrypt Server (software extension required)
- ✓ Class A according to EN 50083-2
- ✓ 19" housing, 1RU
- ✓ Decryption of encrypted program packages possible via CA modules (also high-speed modules)
- ✓ Flexible mapping of programs to CA modules



Available devices:

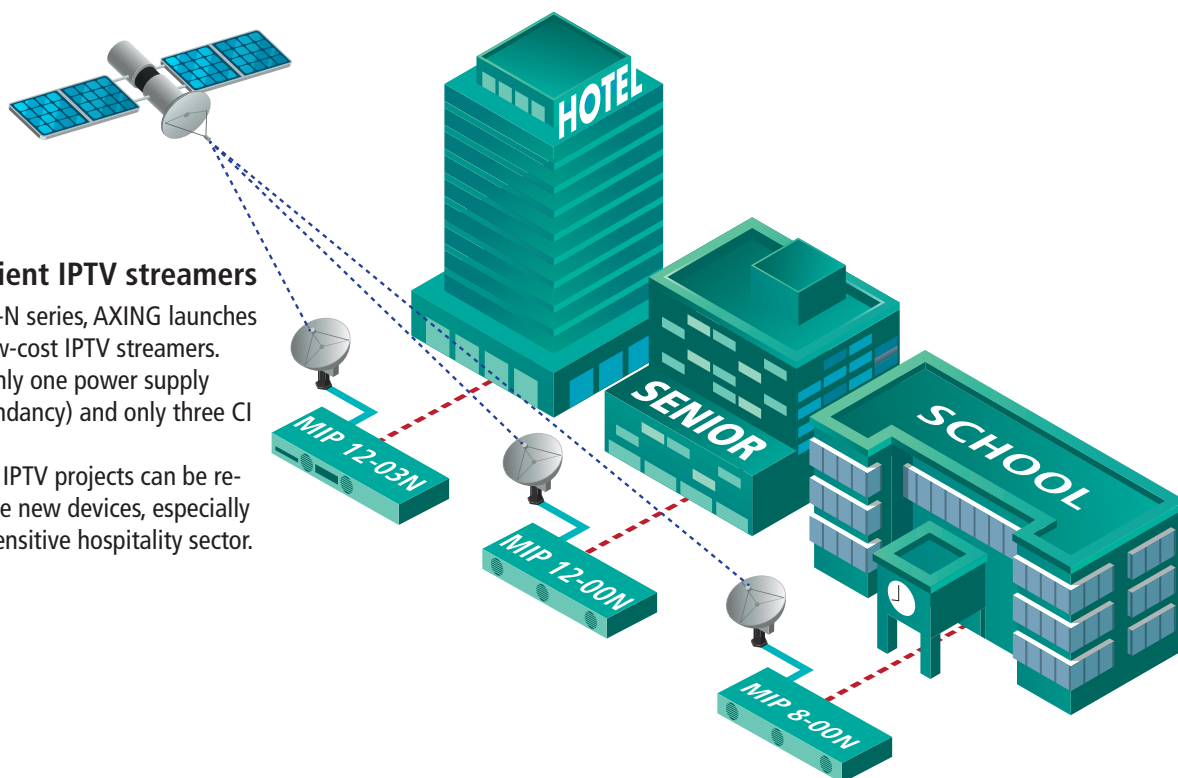
- MIP 8-00N Multituner | IPTV octo streamer | FTA
- MIP 8-03N Multituner | IPTV octo streamer | FTA + 3 × CI
- MIP 12-00N Multituner | IPTV dodeca streamer | FTA
- MIP 12-03N Multituner | IPTV dodeca streamer | FTA + 3 × CI

Software extensions:

- MKS 1-01 | Software extension for PID filtering
- MKS 1-02 | Software extension for CASimulcrypt

Price-efficient IPTV streamers

With the MIP-N series, AXING launches a range of low-cost IPTV streamers. These have only one power supply unit (no redundancy) and only three CI slots. Nevertheless, IPTV projects can be re-realised with the new devices, especially in the price-sensitive hospitality sector.



AXING AG

Gewerbehau Moskau

Phone +41 52 - 742 83 00

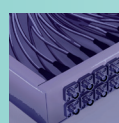
Fax +41 52 - 742 83 19

8262 Ramsen

info@axing.com

www.axing.com

Type	MIP 8-00N	MIP 8-03N	MIP 12-00N	MIP 12-03N
Inputs				
Number of tuners	8 × DVB-S/S2/S2X/T/T2/C	8 × DVB-S/S2/S2X/T/T2/C	12 × DVB-S/S2/S2X/T/T2/C	12 × DVB-S/S2/S2X/T/T2/C
Connector	8 × F-female	8 × F-female	12 × F-female	12 × F-female
Frequency range	900...2150 MHz @ DVB-S/S2/S2X 50...898 MHz @ DVB-C 50...898 MHz @ DVB-T/T2			
Input level	43...84 dBμV @ DVB-S/ S2/S2X 49...84 dBμV @ DVB-C 39...84 dBμV @ DVB-T/T2	43...84 dBμV @ DVB-S/ S2/S2X 49...84 dBμV @ DVB-C 39...84 dBμV @ DVB-T/T2	43...84 dBμV @ DVB-S/ S2/S2X 49...84 dBμV @ DVB-C 39...84 dBμV @ DVB-T/T2	43...84 dBμV @ DVB-S/ S2/S2X 49...84 dBμV @ DVB-C 39...84 dBμV @ DVB-T/T2
LNB voltage	13/17 V; 22 kHz on/off; DiSEqC 1.0			
Max. LNB current	250 mA per input 1000 mA per device			
CI slots	-	3	-	3
Input modulation				
Type	QPSK, 8PSK, 8APSK, 16APSK, 32APSK @ DVB-S/S2/S2X QAM16, QAM32, QAM64, QAM128, QAM256 @ DVB-C QPSK, QAM16, QAM64 @ DVB-T QPSK, QAM16, QAM64, QAM256 @ DVB-T2			
Compliance	DVB-S = EN 300 421 DVB-S2 = EN 302 307-1V1.4.1 DVB-S2X = EN 302 307-2V1.1.1 DVB-C = EN 300 429/ITU-TJ.83 Annex A/C DVB-T = EN 300 744 DVB-T2 = ETSI EN 302 755			
Supported input transport streams	MPEG-2 ISO/IEC 13818 MPEG-4 ISO/IEC 14496			
Error correction	auto			
Symbol rate	1.5...45 MS/s (< 40 MS/s in 32APSK) @ DVB-S/S2/S2X 1...7.2 Mbaud @ DVB-C			
Transportstreams				
Modifiable program information	Program name, SID remapping, PID remapping, PID filtering* TSID, ONID			
LCN	Yes			
Encryption	DVB-CSA*, DVB-CISSA*, ATIS-IDSA*, AES-ECB*, AES-CBC*			
IP output				
Transportstreams	512 × SPTS 8 × MPTS	512 × SPTS 8 × MPTS	512 × SPTS 16 × MPTS	512 × SPTS 16 × MPTS
Total net data rate	900 Mbps			
Data rate per tuner	125 Mbps			
Supported transport protocols	UDP			
Supported application protocols	RTP			
Interfaces				
Ethernet connectors (LAN)	2 × RJ-45			
Ethernet standards	IEEE 802.3, 100 Base-T @ Control IEEE 802.3, 1000 Base-T /1 GbE @ IPTV OUT			
Supported configuration protocols	HTTP, SNMP v1, SNMP v2c, AXING SMARTPortal**			
General				
Operating voltage	100...240 VAC/50...60 Hz			
Switching power supply	1			
Power consumption	45 W	50 W	50 W	55 W
Operating temperature range (acc. to EN 60065)	-10°C...+50°C			
Dimensions (W × H × D) appr.	480 × 253 × 47 mm			
Weight	2.650 kg	2.750 kg	2.850 kg	2.950 kg
Comments	* with software extension only ** encrypted, cloud-based application for configuration, monitoring and remote maintenance			



AXING AG

Gewerbehau Moskau

Phone +41 52 - 742 83 00

Fax +41 52 - 742 83 19

8262 Ramsen

info@axing.com

www.axing.com