

CHP - Compact High Performance Headends DVB Headend

- ✓ Independent tuner inputs
- ✓ Transmodulates DVB-S/S2/S2X into DVB-C or DVB-T
- ✓ Output modulation configurable
- ✓ Remux | Crossmultiplex
- ✓ LCN sorting, PID filtering* and NIT function*
- ✓ Web-based configuration
- ✓ Suitable for AXING SMARTPortal
- ✓ Supports SNMP
- ✓ Interface for CASimulcrypt Server*
- ✓ Can be used for wall mounting or as a 19" unit

* Software extension required



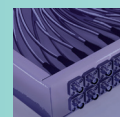
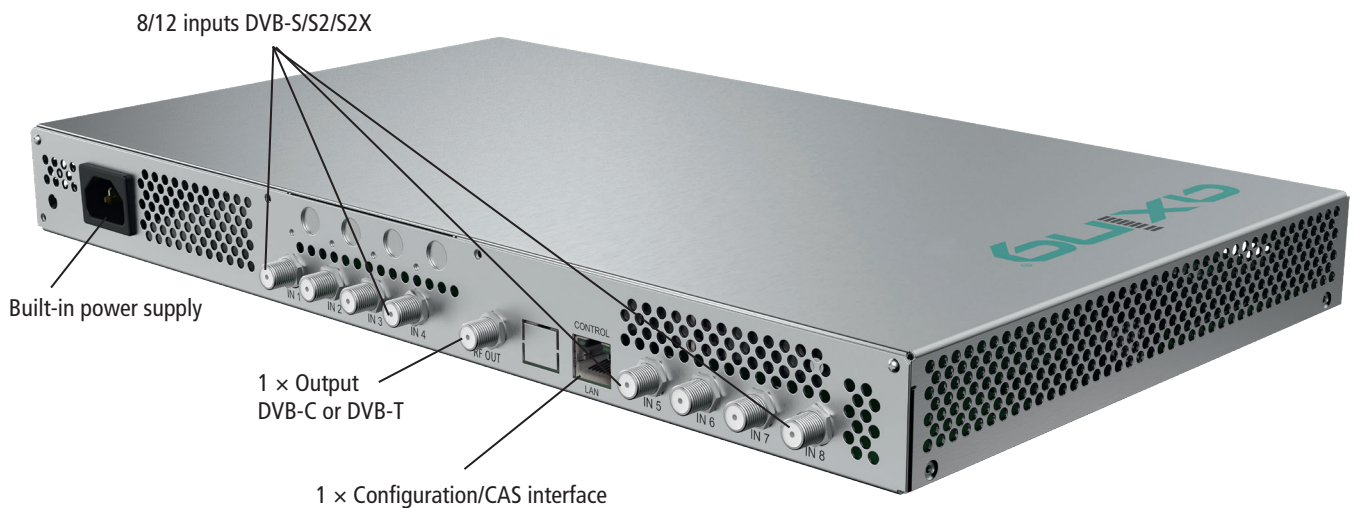
Available devices:

- MK 8-00N | 8 × DVB-S/S2/S2X into 8 × DVB-C/T
- MK 8-03N | 8 × DVB-S/S2/S2X into 8 × DVB-C/T | 3 × CI
- MK 12-00N | 12 × DVB-S/S2/S2X into 12 × DVB-C/T
- MK 12-03N | 12 × DVB-S/S2/S2X into 12 × DVB-C/T | 3 × CI

Accessories:

- MKS 1-00 | Software extension to edit a NIT
- MKS 1-01 | Software extension for PID filtering
- MKS 1-02 | Software extension for CASimulcrypt
- MKS 12-16 | Software extension from 12 to 16 output modulators
- MKZ 1-02 | Front panel for 19" usage of MK xx-00N
- MKZ 1-03 | Front panel for 19" usage of MK xx-03N | CI

Rear side



AXING AG

Gewerbehaus Moskau

Phone +41 52 - 742 83 00

Fax +41 52 - 742 83 19

8262 Ramsen

info@axing.com

www.axing.com

Type	MK 8-00N	MK 8-03N	MK 12-00N	MK 12-03N
Inputs				
Number of tuners	8 × DVB-S/S2/S2X	8 × DVB-S/S2/S2X	12 × DVB-S/S2/S2X	12 × DVB-S/S2/S2X
Connector	8 × F-female	8 × F-female	12 × F-female	12 × F-female
Frequency range	900 ... 2150 MHz @ DVB-S/S2/S2X			
Input level	43 ... 84 dBμV @ DVB-S/S2/S2X			
LNB voltage	13/17 V; 22 kHz on/off; DiSEqC 1.0			
Max. LNB current	250 mA per input 1000 mA per device			
CI slots	-	3	-	3
Input modulation				
Type	QPSK/8PSK/8APSK/16APSK/32APSK @ DVB-S/S2/S2X			
Compliance	DVB-S = EN 300 421 DVB-S2 = EN 302 307-1 v1.4.1 DVB-S2X = EN 302 307-2 v1.1.1			
Supported input transport streams	MPEG-2 ISO/IEC 13818 MPEG-4 ISO/IEC 14496			
Error correction	auto			
Symbol rate	1.5 ... 45 MS/s (< 40 MSymbol/s in 32-APSK)			
Transportstreams				
Modifiable program information	Program name, SID remapping, PID remapping, PID filtering* TSID, ONID			
LCN	Yes			
NIT handling @ DVB-C	auto off manual*			
Encryption	DVB-CSA*, DVB-CISSA*, ATIS-IDSA*, AES-ECB*, AES-CBC*			
Output				
Number of channels	8 × DVB-C/DVB-T	8 × DVB-C/DVB-T	12 × DVB-C/DVB-T	12 × DVB-C/DVB-T
Frequency range	109 ... 1006 MHz @ DVB-C 109 ... 862 MHz @ DVB-T			
Channels selectable	S2...K87 @ DVB-C S2...K69 @ DVB-T			
Channel bandwidth	7/8 MHz @ DVB-T			
Possible frequency shift	-4 ... +4 MHz (0,5 MHz steps)			
Connector	1 × F-female			
Impedance	75 Ω			
Output level adjustable	75 ... 95 dBμV @ DVB-C/DVB-T			
Output modulation				
Compliance	DVB-T (EN 300 744) DVB-C (EN 300 429/ITU-TJ.83 Annex A/C)			
Type	QAM16, QAM32, QAM64, QAM128, QAM256 @ DVB-C QPSK, QAM16, QAM64 @ DVB-T			
MER	≥ 40 dB @ DVB-C ≥ 36 dB @ DVB-T			
Bit rate, max	50.87 Mbps @ DVB-C 31.668 Mbps @ DVB-T			
FFT	8K mode @ DVB-T	8K mode @ DVB-T	2K mode @ DVB-T	2K mode @ DVB-T
FEC	1/2, 2/3, 3/4, 5/6, 7/8 @ DVB-T			
Guard interval	1/4, 1/8, 1/16, 1/32 @ DVB-T			
Symbol rate	1 ... 7.5 MBaud/s			
Interfaces				
Control/CAS	1 × RJ-45			
Compliance Control/CAS	IEEE 802.3, 100 Base-T			
Supported configuration protocols	HTTP, SNMP v1, SNMP v2c, AXING SMARTPortal**			
General				
Operating voltage	100 ... 240 VAC/50 ... 60 Hz			
Power consumption	50 W	50 W	55 W	60 W
Equipotential bonding connection	4 mm ²			
Operating temperature range (acc. to EN 60065)	-10°C...+50°C			
Dimensions (W × H × D) appr.	436 × 253 × 47 mm			
Weight	2.350 kg	2.600 kg	2.750 kg	3.000 kg
Comments	* with software extension only ** encrypted, cloud-based application for configuration, monitoring and remote maintenance			