

# DOCSIS/EuroDOCSIS Cable Modems

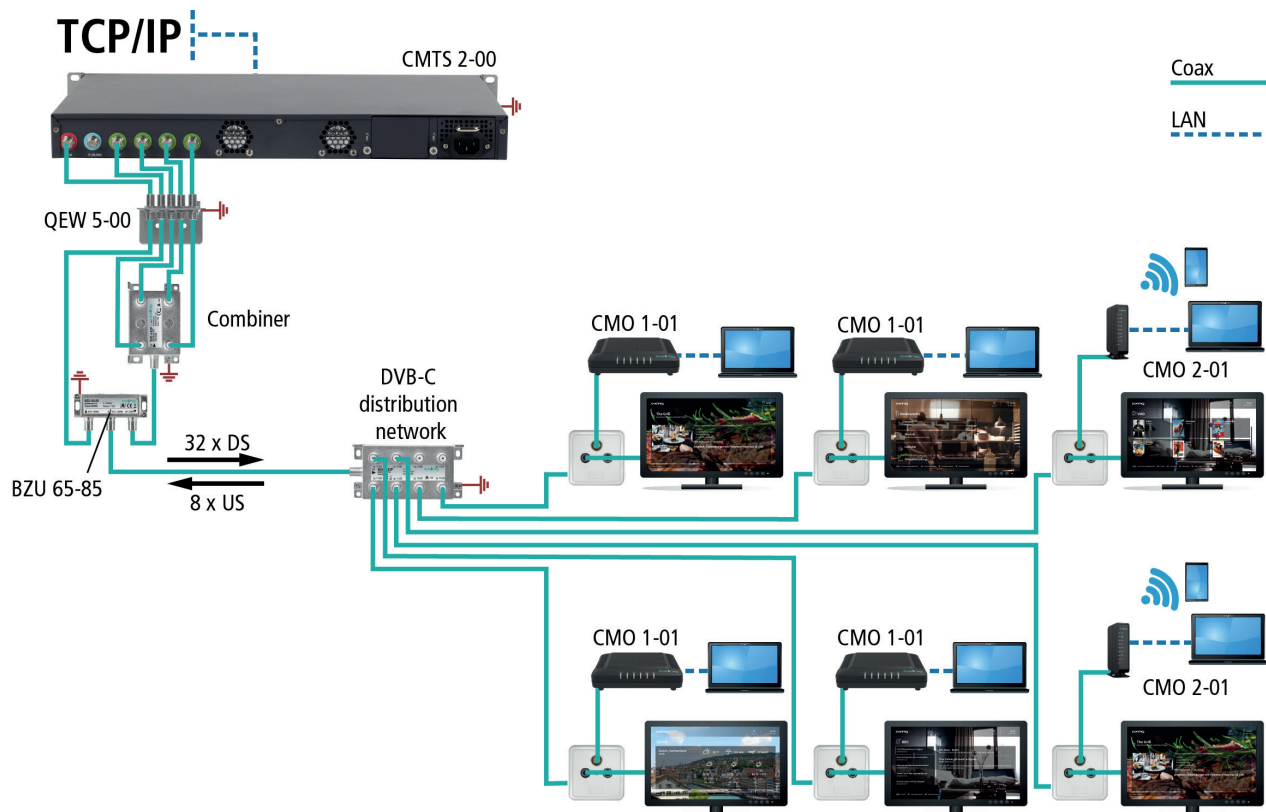
Cable modems are connected to the Internet via downstream and upstream channels in accordance with the DOCSIS standard via a CMTS (Cable Modem Termination System). The cable modems provide access points for Internet and data services via Ethernet and WiFi.

- ✓ Supports up to 8 downstream and 4 upstream channels
- ✓ Full-Band Capture Tuner
- ✓ Downstream data rate up to 400 Mbps
- ✓ Upstream data rate up to 160 Mbps
- ✓ CMO 2-01 with WiFi Access Point



Available devices:

- CMO 1-01 DOCSIS/EuroDOCSIS cable modem
- CMO 2-01 DOCSIS/EuroDOCSIS cable modem | WiFi



AXING AG

Gewerbehaus Moskau

Phone +41 52 - 742 83 00

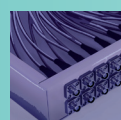
Fax +41 52 - 742 83 19

8262 Ramsen

info@axing.com

www.axing.com

| Type                                | CMO 1-01   | CMO 2-01                            |
|-------------------------------------|--|-------------------------------------|
| <b>Downstream</b>                   |  |                                     |
| Data rate                           | Max. 320 Mbps @ DOCSIS<br>Max. 400 Mbps @ EuroDOCSIS                                       |                                     |
| Frequency range                     | 108...1002 MHz   |                                     |
| Channel bandwidth                   | 6 MHz @ DOCSIS<br>8 MHz @ EuroDOCSIS   |                                     |
| Channel bonding                     | ≤8   |                                     |
| Input level                         | -15 dBmV...+15 dBmV  |                                     |
| Demodulation                        | QAM64, QAM256  |                                     |
| <b>Upstream</b>                     |  |                                     |
| Data rate                           | 120 Mbps @ TDMA<br>160 Mbps @ S-CDMA   |                                     |
| Frequency range                     | 5...42 MHz @ DOCSIS<br>5...65 MHz @ EuroDOCSIS   |                                     |
| Channel bandwidth                   | 200/400/800/1600/3200/6400 KHz   |                                     |
| Output level                        | 8...58 dBmV @ QPSK<br>8...54 dBmV @ 64 QAM<br>8...54 dBmV @ 32 QAM<br>8...53 dBmV @ S-CDMA |                                     |
| Channel bonding                     | ≤4   |                                     |
| Modulation                          | QPSK, QAM8, QAM16, QAM32, QAM64, QAM128 (SCDMA)  |                                     |
| <b>Interfaces</b>                   |  |                                     |
| Ethernet connectors (LAN)           | 1 × RJ 45  | 2 × RJ 45                           |
| Ethernet standards                  | IEEE 802.3 10Base-T   802.3u 100Base-TX   802.3ab 1000Base-T (GigE)                        |                                     |
| WiFi standard                       | -  | IEEE 802.11b/g/n                    |
| WiFi frequency                      | -  | 2.4 GHz single-band                 |
| WiFi signal rate                    | -  | 300 Mbps                            |
| WiFi encryption                     | -  | WPA/WPA2                            |
| Supported transport protocols       | IP, TCP, UDP, ARP  | IP, TCP, UDP, ARP, TR-069           |
| Supported application protocols     | HTTP, ICMP, DHCP, TFTP, SNMP   |                                     |
| DOCSIS                              | F-female (75 Ohm)  |                                     |
| <b>General</b>                      |  |                                     |
| Operating voltage                   | 12 VDC   |                                     |
| Operating temperature range         | 0...40 °C  |                                     |
| Storage temperature range           | -20...70 °C  | -10...60 °C                         |
| Operating humidity (non-condensing) | 10...90%   |                                     |
| Dimensions (W × H × D) appr.        | 160 × 125 × 32,5 mm  | 167 × 125 × 38 mm                   |
| Weight                              | 200 g  | 320 g                               |
| <b>External accessories</b>         |  |                                     |
| Plug-in power supply                | 100...240 V/50...60 Hz   12 V=1 A  | 110...240 V/50...60 Hz   12 V=1,5 A |



AXING AG

Gewerbehaus Moskau

Phone +41 52 - 742 83 00

Fax +41 52 - 742 83 19

8262 Ramsen

info@axing.com

www.axing.com