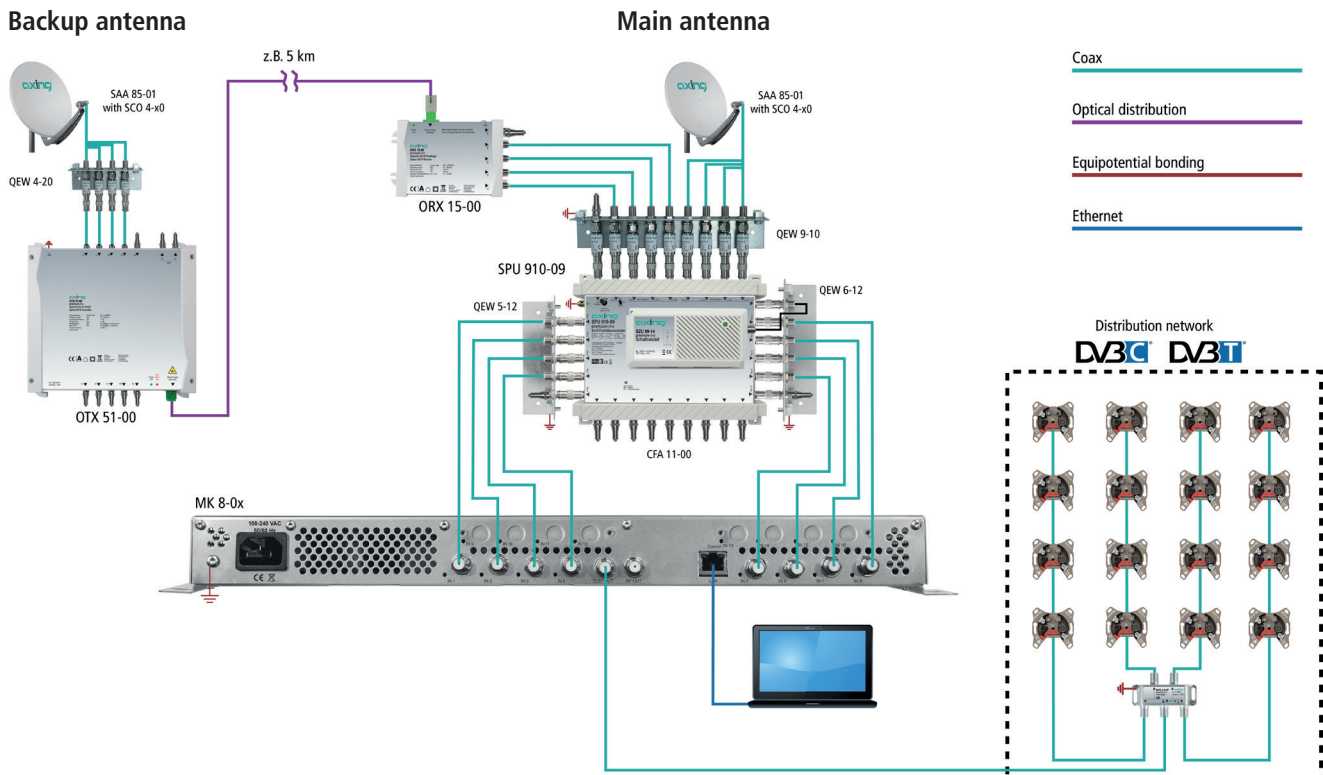


CHP - Compact High Performance Headends

New feature for MK- and MIP-headend series: Feeding-in of a redundant input signal



The AXING MK- and MIP-headend series can be fed from an additional redundant input signal source. Switching can be triggered through various selectable criteria (input level, bit error rate etc.). In the example the DiSEqC command is used to switch from the main antenna to the redundant backup antenna. Both satellite antennas must be aligned to the same satellite reception position. The backup antenna should be located far away from the main antenna. A fiber-connection is suitable to bridge the distance between the two antennas. In bad weather conditions at the main antenna, the system can switch to the backup antenna to ensure seamless reception.

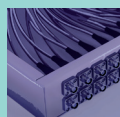
- ✓ Safe input signal supply
- ✓ Various switching criteria
- ✓ Possible for DVB-S, -T and -C



Further information on the DVB headend is available at
<https://axing.com/en/produkte/kopfstellen/dvb-headend/>



Further information about the IP streamer at
<https://axing.com/en/produkte/kopfstellen/streamers-or-encoders/>



AXING AG
Gewerbehaus Moskau
Phone +41 52 - 742 83 00
Fax +41 52 - 742 83 19

8262 Ramsen
info@axing.com
www.axing.com